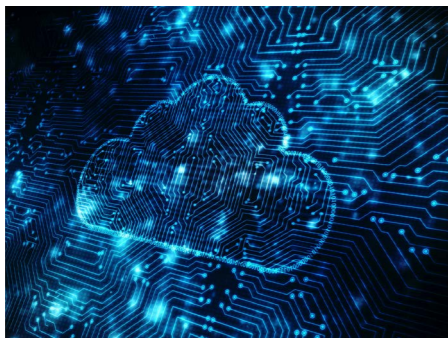


**HARDWARE**

**Meeting every scale of need.**  
 At coolDC, we recognise that every business has different IT capabilities and requirements. We offer a range of solutions from those wanting to utilise their own hardware within our infrastructure, right through to clients that want to fully outsource responsibility. Whether you want processors, memory or storage, our solutions are developed in consultation with you to ensure that you have everything you need, nothing more, nothing less.



**CLOUD**

**Helping your business reduce capital expenses.**  
 Cloud-based services enable businesses to utilise remote processors, software and applications without having to either purchase expensive equipment, or pay for site licences restricted to specific devices/users. With the Cloud, you can access data, software and applications from any device, anywhere, at any time of day. coolDC's Cloud platform differs from other Cloud-based offerings in that it utilises innovative energy efficient processes which help reduce environmental impact and improve latency and resilience. Importantly, while other Cloud solutions disperse data across a range of global sites, both our primary and back-up platforms are based exclusively in the UK.



**SECURITY**

**Countering the threat of security breaches, malware and data theft.**  
 In addition to CCTV and 24-hour cover, our Data Centres are protected by a combination of state-of-the-art biometric and analytic physical security as standard. We also offer a logical service to protect your hardware and data from attack. This actively searches and prevents live threats before they can access and compromise your systems and is monitored 24/7.



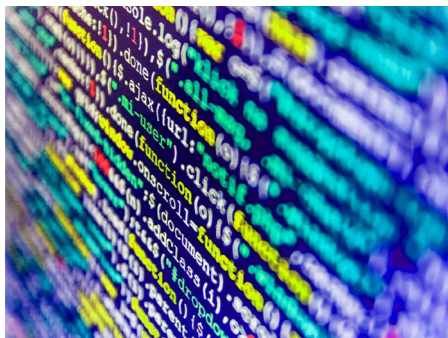
MAKING THE DATA  
 CENTRE WORLD  
 #MORECOOL





**SUPPORT**

**Providing round-the-clock service.**  
Operating to ISO standards, our fully trained and dedicated staff are here to support you whatever your technical needs. Via our helpdesk and online reporting portal, we can provide assistance 24/7.



**BACKUP**

**Reliably protecting your data and systems in the event of a disaster.**  
Whether via human error, a power spike, malicious attack, or an act of God, data and systems are continually at risk. Methodically backing up your systems is one way to help prevent losses. Another alternative is to outsource this task, insuring your business against the loss of systems and information critical to your activities. We offer a solution that will run in the background, synchronizing to our Cloud everything that is important to you and your business without you having to give it a second thought.



**PROFESSIONAL**

**Non-standardised solutions to meet specific requirements.**  
We offer a range of professional services - delivered via our dedicated sales and technical staff - to help identify the best solutions for your business. From design and specification, right through to the final product, we work with a range of partners to ensure that the solution you get is the one your business actually needs.



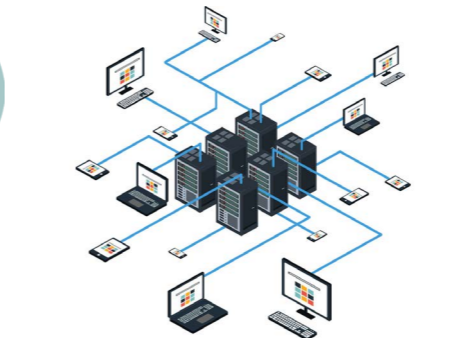
**NETWORK**

**Making the most of connectivity.**  
We are a carrier agnostic network aggregator, taking services from a number of telcos. We then then break these down into different types of services, offering them to clients as cheaper and more flexible solutions than if you bought them direct. Because we bulk-buy network services, we can pass on our savings to clients who may share the same services.



**DESIGN & BUILD**

**Energy efficient, bespoke designs.**  
We have moved away from the practice of building huge, power hungry facilities that produce lots of carbon. Instead, we want to design and build more environmentally sustainable solutions which prove that reductions in both energy and carbon footprints can be achieved with a parallel reduction in physical footprint, but *without* a reduction in power density.



**INFRASTRUCTURE**

**Providing solutions to fit every requirement.**  
Whether your business is an SME with no specialist IT knowledge, or a large enterprise with a dedicated IT team and significant CapEx budget, we're here to help you find the best infrastructural fit for your business. From cabling to racking, power to cooling, we offer both standard and bespoke solutions to meet every scale of need. Our dedicated technical staff will work with you to identify the best and most cost-effective solutions for all your infrastructure requirements.



**MANAGED SERVICES**

**Supporting you every step of your journey.**  
Whether you require as little as 1U, or multiple racks across a number of sites, we provide a range of managed services to assist you in getting the most from your IT systems. We can provide support across the entire life-cycle of a project, including designing IT infrastructure and network layouts, procuring services, configuring equipment and managing logical security. Our end-to-end service is designed to help you update your systems and make them more efficient, thereby enhancing performance and productivity.